

Notes

SP = sul Ponticello
 ord = ordinario
 ST = Sul Tasto

Dynamics range from ppp to fff
 ppp = as quiet as possible
 fff = as loud as possible

All dynamics refer to the amount of effort, not the sounding result

All glissandi should encompass the entirety of both notes it is attached to.

♯ = tremolo as fast as possible.

- The Conductor's score is transposing
- Double Bass & guitar sound an octave lower
 - The Clarinet sounds a major second lower.

Guitar

The guitar only has one chord at the end of both movements, however, during the movements the guitarist should be sat ready and alert, looking as if they are constantly about to play.

The Piece

- The piece consists of two movements, each lasting approximately 1 1/2 minutes.
- They should be played after each other with as little gap between as possible.
- They can be played in any order.
- The piccolo, clarinet, violin, cello and double bass have a different score for each movement
- For the trumpet, guitar, piano and vibraphone, they play exactly the same material in both movements.

- Both movements should be played at a constant $\lambda=72$ with maximum energy and intensity.
- Imagine slowly submerging your head underwater whilst listening to loud white noise.

Performers

- When performers have an instruction to "stare at the guitarist" near the end of each movement, they should slowly turn their heads to look at the guitarist as if in slow motion. They should keep staring until the end of the movement.
- All performers should turn their head at a speed so that they have finished turning their head by the end of bar 20.

All Of Those Whose Ears Are Vacant Passageways For His Word

for Model 62

David Pocknee

October 2011

Trumpet

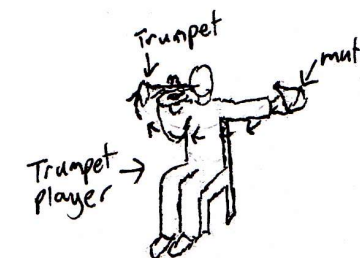
The trumpet player should slowly attach a mute into their trumpet.

This action should last from bar 1 to bar 20, as if in slow motion.

The trumpet player should start each movement with the mute unfixed and held at arms' length 90° from their body.

(see diagram below)

Movement of the
 mute over:
 bars 1-20
 of each movement



Transposing Score

Harmonic Field 2

David Pocknee

I

$\text{♩} = 72$ Intense

Handwritten musical score for various instruments including Piccolo, Clarinet in Bb, Trumpet in C, Ctr (entry attend), Pno, Perc Vibraphone (no fan), Vln, VCl, and Db. The score includes dynamic markings (mp, mf, p, f, ff, pp), articulation (tr, >, >>>), and performance instructions such as "gradually apply mute over the course of the piece" and "Piano is pedalling low ctt". It features complex rhythmic patterns with time signatures like 5:4 and 3:2, and includes a boxed section labeled [B].

Annotations include:

- Piccolo:** $\text{♩} = 72$ Intense, dynamic markings mp, mf, p, f, mf, f.
- Clarinet in Bb:** $\text{♩} = 72$ Intense, dynamic markings mp, mf, p, ff, mf, f, sss, mf, 5:4, 3:2, f.
- Trumpet in C:** $\text{♩} = 72$ Intense (gradually apply mute over the course of the piece), apply mute, dynamic markings ff > p dim..., pp.
- Ctr (entry attend):** $\text{♩} = 72$ Intense, dynamic markings mp, mf, f.
- Pno:** $\text{♩} = 72$ Intense, dynamic markings mp, mf, f, mf, mf.
- Perc Vibraphone (no fan):** $\text{♩} = 72$ Intense, dynamic markings mp, mf, pp, mf, ff, f, p, ff, 5:4, 3:2.
- Vln:** $\text{♩} = 72$ Intense, dynamic markings ff, mf, ff, mf, ff, mf, pp.
- VCl:** $\text{♩} = 72$ Intense, dynamic markings mf, ff, SP, ord., f, SP, ord., SP.
- Db:** $\text{♩} = 72$ Intense, dynamic markings ff, f, PP, ff, Harm. gliss, mf, SP, ord., SP, harm. gliss.

Harmonic Field 3

Handwritten musical score for a section titled "Harmonic Field 3". The score is arranged in eight staves, each with a boxed "B" in the top left corner. The instruments and their parts are:

- Piccolo:** Treble clef, 5/4 time signature. Features complex rhythmic patterns with triplets and slurs. Dynamics range from *p* to *mf*. Includes markings like "Ermm?", "L3", "3", "5", "P", "3", "tr", "wavy", "do", "(do)", "7", "L5:4J", "f", "f", "mf", "3", "5", "6", "5".
- Cl:** Treble clef, 5/4 time signature. Features complex rhythmic patterns with triplets and slurs. Dynamics range from *p* to *mf*. Includes markings like "Ermm?", "f", "mp", "mf", "3", "5:4J", "6", "5".
- Trumpet:** Treble clef, 5/4 time signature. Features a long, sustained note with a dynamic marking of *f > p*.
- Pno.:** Grand staff (treble and bass clefs), 5/4 time signature. Features complex rhythmic patterns with triplets and slurs. Dynamics range from *mf* to *pp*. Includes markings like "8ve", "ad lib.", "f", "pp".
- Vibr.:** Treble clef, 5/4 time signature. Features complex rhythmic patterns with triplets and slurs. Dynamics range from *p* to *mf*. Includes markings like "P", "mf", "3", "P", "5", "3:2J", "mf".
- Vln.:** Treble clef, 5/4 time signature. Features complex rhythmic patterns with triplets and slurs. Dynamics range from *mf* to *ff*. Includes markings like "SP → ord.", "ST", "3:2J", "SP", "harm. alts.", "mf", "ff", "mf", "5:4J", "SP → ord.", "ff".
- Vcl.:** Bass clef, 5/4 time signature. Features complex rhythmic patterns with triplets and slurs. Dynamics range from *mf* to *ff*. Includes markings like "SP", "ord", "sul III", "harm.", "3:2J", "ord", "III", "SP", "5:4J", "SP", "ord.", "tr", "wavy", "SP", "ff".
- Db:** Bass clef, 5/4 time signature. Features complex rhythmic patterns with triplets and slurs. Dynamics range from *mf* to *ff*. Includes markings like "P", "ST", "SP", "5:4J", "ord", "III", "SP", "ord.", "harm.", "gliss.", "mf", "p", "mf", "ff".

Harmonic Field 4

Harmonic Field 5

Handwritten musical score for an orchestral ensemble, featuring the following instruments and parts:

- Piccolo:** Melodic line with dynamics *pp*, *mp*, *mf*, *p*, and *mf*. Includes a $3:2$ ratio marking.
- Cl (Clarinet):** Melodic line with dynamics *p*, *mf*, and *p*. Includes a $5:4$ ratio marking.
- Tpt. (Trumpet):** Melodic line with dynamics *mf*, *pp*, and *mp*.
- Pno (Piano):** Accompaniment with dense textures, including a section marked *pp* with a $8ve$ (8va) marking.
- Vibr (Vibraphone):** Melodic line with dynamics *mf*, *f*, and *p*. Includes a $8ve$ marking.
- Vln (Violin):** Melodic line with dynamics *ff*, *mf*, and *p*. Includes markings for *ord.*, *SP*, *ST*, *harm.*, and *gliss.*
- Vcl (Violoncello):** Melodic line with dynamics *ff*, *mf*, and *mf*. Includes markings for *ord.*, *SP*, *ST*, and circled Roman numerals (II, IV).
- Db (Double Bass):** Melodic line with dynamics *mf* and *ff*. Includes markings for *ord.*, *pizz.*, *ST*, *arco*, and *harm. gliss.*

The score is divided into two sections: **Harmonic Field 4** and **Harmonic Field 5**, indicated by arrows at the top. The music features complex rhythmic patterns, including $3:2$ and $5:4$ ratios, and various performance techniques such as *tr.* (trills), *ord.* (order), *SP* (sustained pedal), *ST* (sustained tone), *harm.* (harmonics), and *gliss.* (glissando).

Handwritten musical score for a chamber ensemble, featuring the following instruments and parts:

- Picc.** (Piccolo): Starts with *Harmonic Field 6* and *Harmonic Field 7*. Includes notes for *do* and *pp*.
- Cl** (Clarinet): Features *tr* (trills) and *3:2* ratios. Dynamics range from *pp* to *mf*.
- Tpt** (Trumpet): Includes *mp* and *ppp* dynamics.
- Pno** (Piano): Includes *tr 8ve* (trills 8 octaves) and *b2(4z)* markings. Dynamics include *pp*.
- Vibr** (Vibraphone): Includes *tr* and *8vb* markings. Dynamics include *mf*.
- Vln** (Violin): Includes *arco SP*, *ST*, and *pizz.* (pizzicato) markings. Ratios *3:2* and *5:4* are noted. Dynamics range from *pp* to *mf*.
- Vcl** (Violoncello): Includes *pizz.* markings. Dynamics include *mf*.
- Db** (Double Bass): Includes *SP*, *pizz*, *harm gliss*, and *5:4* markings. Dynamics range from *f* to *mf*.

The score is divided into measures with various time signatures (e.g., 12/8, 2/4, 4/4) and includes performance instructions such as *arco*, *pizz.*, and *harm gliss*.

3 instruments

Harmonic Field 8

Harmonic Field 9

Harmonic Field 10

Handwritten musical score for Percussion, Clarinet, Trumpet, Piano, Vibraphone, Violin, Viola, and Double Bass. The score is divided into three sections: Harmonic Field 8, Harmonic Field 9, and Harmonic Field 10. Each section is marked with a downward arrow and a boxed 'F' with the number '16' above it. The music is written in treble clef for most instruments and bass clef for the Double Bass. The time signature changes from 5/8 to 2/4 and then to 3/4. Performance instructions include dynamics (pp, ppp, p), articulation (pizz., arco ord.), and specific playing techniques (soft mallets, stare at guitarist until end of piece). The score concludes with a double bar line and a repeat sign.

Picc. F_{16} pp ppp pp ppp stare at guitarist until end of piece

Cl F_{16} stare at guitarist until end of piece

Tpt F_{16} pp ppp pp ppp

Pno F_{16} stare at guitarist until end of piece

Vibr. F_{16} soft mallets pp stare at guitarist until end of piece

Vln. F_{16} pizz. p pp

Vcl. F_{16} pizz. p pp

Db F_{16} pizz. p arco ord. SP pizz. pp ppp



Harmonic field 11
↓

Harmonic field 12
↓

Harmonic field 13
↓

20 mate is fully affixed by here

Tpt

ppp

20

Gtr

ppp - as quiet as possible

3 2 1 l.v.

— just louder than the cello.

20

Vln

stare at guitarist

20 stare at the guitarist until the end of the piece

Vcl

20

Db

pizz.

l.v. stare at guitarist

DP
October 2011

Transposing Score

Harmonic Field 2

David Pocknee

II

$\text{♩} = 72$ Intense

Handwritten musical score for various instruments including Piccolo, Clarinet in Bb, Trumpet in C, Pno, Perc Vibraphone, Vln, Vcl, and Db. The score includes complex rhythmic patterns, dynamic markings (mp, mf, p, f, ff, pp), and performance instructions such as 'Intense', 'gradually apply mute over the course of the piece', and 'apply mute'. It features a variety of time signatures (4/4, 3/4, 5/4) and includes a section titled 'Harmonic Field 2' with a 3:2 ratio. The score is densely annotated with notes, rests, and performance directions.

Harmonic Field 3

Piccolo

Cl

Trumpet

Pno.

Vibr.

Vln.

Vcl.

Vb.

Harmonic Field 4

Harmonic Field 5

Handwritten musical score for Piccolo, Cl, Tpt., Pno., Vibr., Vln, Vcl, and Db. The score is divided into two sections: "Harmonic Field 4" and "Harmonic Field 5".

Instrumentation and Dynamics:

- Piccolo:** Starts with *f*, then *pp*, *mp*, *mf*, *p*, *p*, *mf*.
- Cl:** Starts with *p*, then *mf*, *mp*, *mf*, *p*.
- Tpt.:** Starts with *mf*, *pp*, *mp*, *pp*.
- Pno.:** Starts with *f*, then *pp*.
- Vibr.:** Starts with *f*, then *mf*, *f*, *p*, *p*.
- Vln:** Starts with *ff*, then *f*, *mf*, *p*.
- Vcl:** Starts with *f*, then *ff*, *mf*.
- Db:** Starts with *mf*, *ff*, *mf*, *mf*.

Performance Techniques and Annotations:

- Harmonic Fields:** "Harmonic Field 4" and "Harmonic Field 5" are indicated at the top.
- Tempo/Style:** *ord.* (order), *ST* (staccato), *SP* (sustained pedal), *pizz.* (pizzicato), *harm. gliss.* (harmonic glissando).
- Articulation:** *tr* (trills), *acc.* (accents), *tr* (trills), *tr* (trills).
- Other:** *8ve* (8va), *8ve* (8va), *8ve* (8va).

Complexity: The score features complex rhythmic patterns, including triplets and 3:2 ratios, and a variety of dynamic markings from *pp* to *ff*.

Handwritten musical score for Piccolo, Clarinet, Trumpet, Piano, Viola, Violin, and Double Bass. The score is divided into two sections: "Harmonic Field 6" and "Harmonic Field 7".

Harmonic Field 6: This section begins with a Piccolo part marked with a '12' and a downward arrow. The Clarinet part features a melodic line with dynamics from *pp* to *mf*, including a trill and a 3:2 ratio. The Piano part includes a dense chordal texture with an 8ve marking and a 3:2 ratio. The Viola part has a melodic line with dynamics from *pp* to *mf*, including an *arco SP* marking and a 3:2 ratio. The Violin part features a melodic line with dynamics from *pp* to *mf*, including an *arco* marking and a 3:2 ratio. The Double Bass part has a rhythmic line with dynamics from *mf* to *p*, including a *harm gliss* marking and a 5:4 ratio.

Harmonic Field 7: This section begins with a Piccolo part marked with a '7' and a downward arrow. The Clarinet part features a melodic line with dynamics from *pp* to *p*. The Piano part includes a sustained chord with a *pp* dynamic and an 8ve marking. The Viola part has a melodic line with dynamics from *mf* to *p*, including a *pizz.* marking and a 5:4 ratio. The Violin part features a melodic line with dynamics from *mf* to *p*, including a *pizz.* marking and a 5:4 ratio. The Double Bass part has a rhythmic line with dynamics from *p* to *mf*, including a *pizz.* marking and a 5:4 ratio.

Key markings include *pp*, *p*, *mf*, *ppp*, *arco*, *ST*, *pizz.*, *harm gliss*, and various ratios (3:2, 5:4, 8ve). The score is written on a grand staff with multiple staves for each instrument.

3 instruments

Harmonic Field 8

Harmonic Field 9

Harmonic Field 10

Picc. F^{16} pp b^{\flat} ppp G stare at guitarist until end of piece

Musical staff for Piccolo (Picc.) in treble clef. It features a half note F^{16} with a pp dynamic, followed by a whole rest. In the next measure, there is a half note b^{\flat} with a ppp dynamic. The piece concludes with a whole note G and the instruction "stare at guitarist until end of piece". The key signature has one flat, and the time signature is 5/4.

Cl F^{16} stare at guitarist until end of piece G

Musical staff for Clarinet (Cl) in treble clef. It features a half note F^{16} with the instruction "stare at guitarist until end of piece", followed by a whole rest. In the next measure, there is a whole note G . The key signature has one flat, and the time signature is 5/4.

Tpt F^{16} $\text{pp} > \text{ppp}$ G $\text{pp} > \text{ppp}$

Musical staff for Trumpet (Tpt) in treble clef. It features a half note F^{16} with a pp dynamic, followed by a whole note b^{\flat} with a ppp dynamic. The piece concludes with a whole note G with a pp dynamic, followed by a whole rest with a ppp dynamic. The key signature has one flat, and the time signature is 5/4.

Pno F^{16} stare at guitarist until end of piece G

Musical staff for Piano (Pno) in treble and bass clefs. It features a half note F^{16} with the instruction "stare at guitarist until end of piece", followed by a whole rest. In the next measure, there is a whole note G . The key signature has one flat, and the time signature is 5/4.

Vibr. F^{16} soft mallets pp b^{\flat} b^{\flat} b^{\flat} b^{\flat} 4^{\sharp} stare at guitarist until end of piece G

Musical staff for Vibraphone (Vibr.) in treble clef. It features a half note F^{16} with the instruction "soft mallets" and a pp dynamic, followed by a whole rest. In the next measure, there is a quarter note b^{\flat} , a quarter note b^{\flat} , a quarter note b^{\flat} , and a quarter note b^{\flat} , all with a pp dynamic. This is followed by a quarter note 4^{\sharp} with a pp dynamic. The piece concludes with a whole note G and the instruction "stare at guitarist until end of piece". The key signature has one flat, and the time signature is 5/4.

Vln. F^{16} pizz. p 5 5:4 G pp 5:4

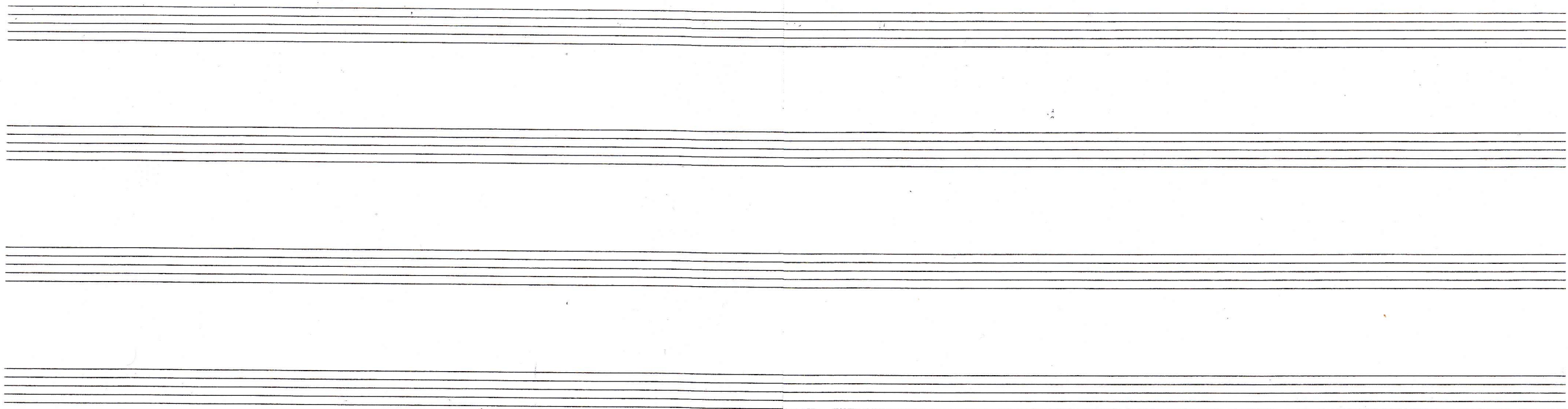
Musical staff for Violin (Vln.) in treble clef. It features a half note F^{16} with a pizz. marking and a p dynamic, followed by a whole rest. In the next measure, there is a quarter note b^{\flat} with a pizz. marking and a p dynamic, followed by a quarter note 5 with a pizz. marking and a p dynamic. This is followed by a quarter note 5:4 with a pizz. marking and a p dynamic. The piece concludes with a whole note G with a pp dynamic, followed by a quarter note 5:4 with a pizz. marking and a p dynamic. The key signature has one flat, and the time signature is 5/4.

Vcl. F^{16} pizz. p 7^{\sharp} pizz. p G pp 3:2

Musical staff for Viola (Vcl.) in treble clef. It features a half note F^{16} with a pizz. marking and a p dynamic, followed by a whole rest. In the next measure, there is a quarter note 7^{\sharp} with a pizz. marking and a p dynamic, followed by a quarter note 7^{\sharp} with a pizz. marking and a p dynamic. This is followed by a quarter note G with a pizz. marking and a pp dynamic. The piece concludes with a whole note 3:2 with a pizz. marking and a pp dynamic. The key signature has one flat, and the time signature is 5/4.

Vb. F^{16} pizz. p arco ord. SP pizz. pp G ppp

Musical staff for Double Bass (Vb.) in bass clef. It features a half note F^{16} with a pizz. marking and a p dynamic, followed by a whole rest. In the next measure, there is a quarter note b^{\flat} with an arco ord. marking and an SP marking, followed by a quarter note b^{\flat} with an arco ord. marking and an SP marking. This is followed by a quarter note pizz. with a pp dynamic. The piece concludes with a whole note G with a ppp dynamic. The key signature has one flat, and the time signature is 5/4.



Harmonic Field II

Harmonic field

Harmonic Field 13

20 *mute is fully affixed by here*

Tpt

ppp

Harmonic field 13

ppp - as quiet as possible

20

Gtr

ppp

Harmonic field 13

l.v.

— just louder than the cello.

20

Vln

ppp

stare at guitarist

20 stare at the guitarist until the end of the piece

Vcl

ppp

20

Db

ppp

pizz. stare at guitarist

DP
October 2011